

**VALVEMAN**



[www.valveman-service.com](http://www.valveman-service.com)





## ABOUT US

Valveman is a part of Boilerman Group which provides service solution of Boiler, Automations, valves and Coolers for Marine. Valveman Engineering Co., Ltd. locates in Suzhou China, focus on Testing, Maintenance, Repair, Parts & Replacement integrated MRO business of Valves, Pumps in multiple industries. provide total services to Marine, Petro Chemical, Chemical, Power, Steel, Paper&Pulp, Pharmacy.

# OUR SERVICES



## Inspection

We provide all-round inspection services in the whole life cycle of the valve, such as safety valve calibration, butterfly valve, globe valve, ball valve, check valve, regulating valve inspection, supply inspection, internal leakage inspection, maintenance inspection, etc., to meet all relevant requirements of different regions and markets.

## Repair

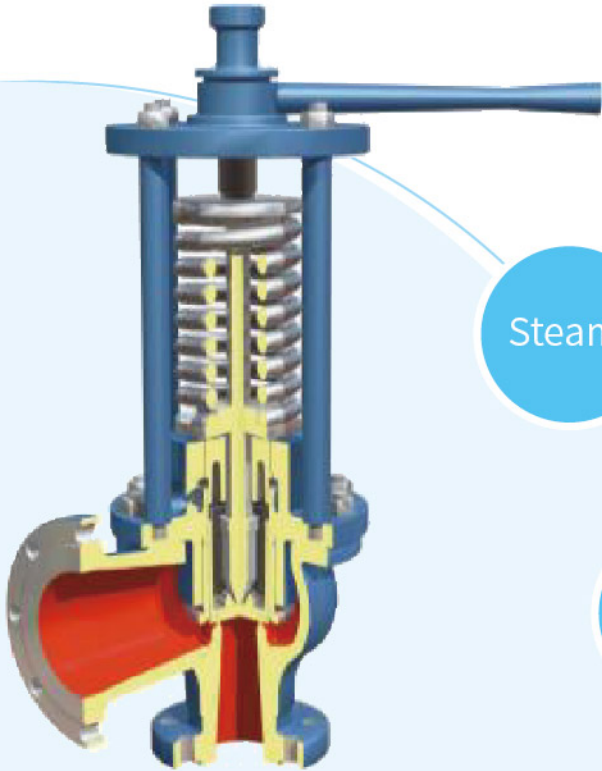
Through years of work experience and technology accumulation, we use advanced valve maintenance technology to provide you with the repair business of various valve products, such as grinding of sealing surface, deeply repair of sealing surface, replacement of sealing parts, etc., so as to ensure that the products meet the working conditions and standard requirements.

## Testing

With accurate testing equipment and professional technical personnel, we provide you with valve testing services, such as valve sealing test, micro leakage test, fire resistance test, liquidity test and low temperature test, so as to ensure that the performance of valve products meets the requirements of various standards.

## Product sales

Valve, valve accessories, testing equipment, maintenance tools, grinding accessories, technical training, etc. Our technical experts can provide you with professional type selection advice and products to support your correct choice in various fields.



**SAFETY VALVE**

Steam

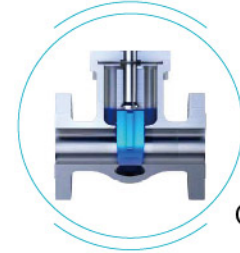
Cryogenic

Assisted

Pilot

Vacuum

**SERVICE  
ABILITY**



On/Off Valve



Control Valve



Ball Valve



Butterfly Valve



# WORKING PROCESS

Technical Communication

Pre Examination/Testing

Valve Repairing

Valve Pressure Setting or Popping

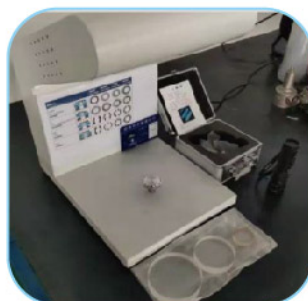
Valves & Reports Delivery

Class & Shipowner Witness

Valve Pressure Setting or Popping



# EQUIPMENTS



## SERVICE ABILITY FOR BRANDS

  
FUKUI





































  
WESTAD  
A KLINGER Company

  
Bopp & Reuther



**VALVEMAN**

### CHINA

**Hdqr:** Rm1502, No 1369 Dong Fang Rd, Pudong, Shanghai, 200127

**Workshop:** Room C-108 No.32 Dongfu Road Suzhou China

Tel:+86 512 6742 0760

sales@valveman-service.com

### SINGAPORE

**SG Workshop:** 50 Tuas Ave 11, #02-36, Singapore 639107

Tel :+65 67219596 Mob : +65 87988669

sales@valveman-service.com

[www.valveman-service.com](http://www.valveman-service.com)